

# CENTRAL OREGON ROCK COLLECTORS NEWSLETTER

*It's in our name...It's what we do...We collect rocks!!!*



---

## Mike and Marty Betsch, M&M

by Tonia Smith



I had the privilege to interview Mike and Marty Betsch this week. If you have not had the chance to visit with them, take the time to do so.

Mike grew up in Great Falls, Montana before entering the US Army in 1965 and served in Vietnam.

Marty was in the US Army Nurse Corps. She served stateside during the Vietnam War. She was stationed at Ft. Sam Houston in Texas, The Presidio in San Francisco and Ft. Lewis in Washington.

Mike and Marty, M&M, met in Seattle while Marty was attending the University of Washington. They

married in 1970 and moved to Bend on April 10, 1975. Mike was a Radio Broadcaster at KBND going by the stage name of Mike Blair, a.k.a. the Blair Affair. Marty worked at the hospital on the Hill before the present hospital was built "out in the middle of nowhere".

M&M got into rock hounding when Mike retired in 2001, digging for thundereggs at Richardson's Ranch. They visited Canutt's Rock shop in Redmond in search of a club to join. That led them to Sue Liebetrau who invited them to a rock club summer party held at Paul Asman's home in

Prineville. Al and Sue Leibetrau got them excited about fluorescent minerals once they saw their museum quality collection. Then they bought a 10 inch rock saw at an Estate sale and kept on accumulating additional equipment over the years.

The club started meeting in Redmond, at Ray's Market once a month, then moved to other locations as the club grew. They decided on Redmond meeting places as it was central to all members of Central Oregon. Some of the initial members were Dale and Debbie Simon, Jerry and Stephanie Brown, Jan and Jules Wetzel, Al and Sue, Paul Asman and Roger and Jan Whiteman.

One member was a website creator and said no one would find the club as there was no website. She created the first club website and helped the club grow exponentially to where we are now...one of the largest rocks clubs in the state. Today the club is made up of hundreds of many wonderful talented people of all age groups.

M&M love cutting and polishing Arizona Rainbow Petrified wood and their favorite rocks are Oregon home grown Thunderegg. Hampton Petrified wood and obsidian from Glass Buttes are ranked highly too. Like all rockhounds they started with nary a rock to their name and now their yard is FULL of rocks. If only fluorescent rocks were as easy to find...

Like I said at the beginning, if you haven't had a chance to visit with Mike and Marty, do so. They have so many stories of our club when it was young. You will not regret it!



Mike and  
Marty are  
Lifetime  
Honorary  
Members of  
CORC





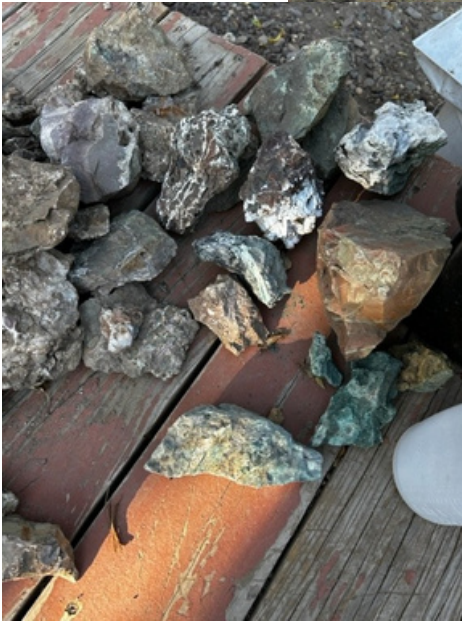
Thank you to all the Central Oregon Rock Collectors members who have served or are serving in the military.



# Pole Creek Field Trip



The Pole Creek Field trip was a great experience for all. We had about 25 people show up for the dig. There was so much float on the ground because of the recent rains, that it made the fieldtrip that much more fun to be on.



The weather was beautiful. We had so much fun digging and following the run off trail with boundless finds of jasper and petrified wood.





illustrations of.com #1047632

## OREGON COUNCIL OF ROCK AND MINERAL CLUBS

### **HAMPTON BUTTE WORK PARTY**

**SATURDAY, SEPTEMBER 23, 2023**

**9:00 am - 4:00 pm**

**ALL MEMBER CLUBS ARE INVITED TO HELP WITH SITE  
RESTORATION ON NATIONAL PUBLIC LANDS DAY**

**QUESTIONS - DAVE WILLIAMS - [IGNEOUS80@Q.COM](mailto:IGNEOUS80@Q.COM)**

**OR 541-677-9341 (NO TEXTS)**

Meet at the Brothers Rest Area on Highway 20 (MP 42.8) east of Bend @8:00 am or at the site @9:00 am. Bring lunch, water and your field gear. Be prepared for hot or cold high desert fall weather. You will also need a long handle shovel and short tine rake. We will fill and level earlier digs. The ground is soft and the holes are less than 24" deep.

**Directions from Brothers Rest Area** – Take Highway 20 east to Van Lake Road. Turn north and follow Van Lake Road 10.5 - 11 miles to SE Price/Twelve Mile Road and turn right. Follow Price Road about 2 miles to the site. It is 22 miles one way from the Brothers Rest Area to Hampton Butte.

---

# July Field Trip/Fire Opal

Our club is making a first-time visit to Jamie Lant's Red October 2 mining claim for fire opal. See below for the email Jamie sent for more info. Mike and Marty Betsch and I are staying Friday night, July 14, in Lakeview. At 8:30 AM on Saturday morning, July 15, we plan to meet at the Quartz Mountain summit, milepost 66, off Hwy 140 which runs between Lakeview and Klamath Falls. There is a bathroom at the turnoff, which is on the south side of the road. In the winter it is Quartz Mountain Sno-Park. We will be heading south from there, and will provide a more detailed map when we meet up.

If you drive from Central Oregon to make a very long day trip, we plan to meet the next group at 10:30 AM on Saturday morning at the turnoff. If you drive straight through, taking Hwy 97 south, it is roughly 3 1/2 hours from Bend to Bly on Hwy 140, and the Quartz Mtn turnoff is about 13 miles east of Bly. Jamie says the road to the mine is suitable for all vehicles. I suggest bringing protective wear such as goggles or safety glass and sunscreen as well as hard rock digging tools such as chisel and sledge hammer. Please bring plenty of water and snacks, as usual. Jamie does have some equipment at the site for our use (see his email below).

If you google "Jamie Lant fire opal" there are videos and articles about the Red October 2 mine. Please let me know if you have any questions.

Suzie Meeker, Field trip co-chair, phone 602-689-6069, email [suziej49@gmail.com](mailto:suziej49@gmail.com)

*Email from Jamie Lant:*

Our mine has zero fees. Totally free digging. We do accept donations. All donations go to providing tools and gas for us to get to the mine to do maintenance. Open from May 1st through October 31st. Feel free to use the hammers/chisels/ hand tools/buckets/wheelbarrow. The tailings pile is a good spot to find opal that may have been mud covered. I would say a good 8 at a time could dig with a comfortable and safe amount of room at 1 time maybe more. Feel free to walk around the whole claim if you like. There is dispersed camping at and around the mine, Lofton and Heart Lakes campgrounds have toilets, and trailer hookups at Lone Pine (Bly), and Juniper Reservoir (Lakeview). Please be safe, be nice to other diggers, leave no trash, respect the plants/animals, do no undermining, remove your tailings from the pit, follow all applicable laws, and just the usual general etiquette.

Jamie and Marion Lant  
Terrapin Rocks

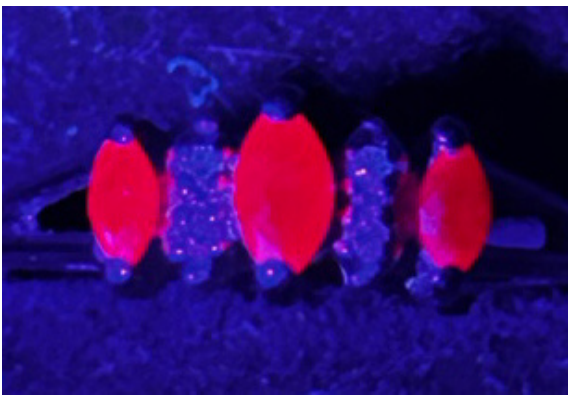
---

---

## The Birthstone for July is: Ruby



Ruby Ring



Ruby Ring Fluorescenced

A ruby is a pinkish red to blood-red colored gemstone, a variety of the mineral corundum (aluminium oxide). Ruby is one of the most popular traditional jewelry gems and is very durable. Other varieties of gem-quality corundum are called sapphires. Ruby is one of the traditional cardinal gems, alongside amethyst, sapphire, emerald, and diamond. The word ruby comes from *ruber*, Latin for red. The color of a ruby is due to the element chromium. (Chromium is a chemical element with the symbol Cr and atomic number 24. It is the first element in group 6. It is a steely-grey, lustrous, hard, and brittle transition metal.) a transition metal (or transition element) is a chemical element in the d-block of the periodic table. Since they are metals, they are lustrous and have good electrical and thermal conductivity.

Rubies have a hardness of 9.0 on the Mohs scale of mineral hardness. Among the natural gems, only moissanite and diamond are harder, with diamond having a Mohs hardness of 10.0 and moissanite falling somewhere in between corundum (ruby) and diamond in hardness.

The quality of a ruby is determined by its color, cut, and clarity, which, along with carat weight, affect its value. The brightest and most valuable shade of red, called blood-red or pigeon blood, commands a large premium over other rubies of similar quality. After color follows clarity: similar to diamonds, a clear stone will command a premium, but a ruby without any needle-like rutile inclusions may indicate that the stone has been treated..

Generally, gemstone-quality corundum in all shades of red, including pink, are called rubies. However, in the United States, a minimum color saturation must be met to be called a ruby; otherwise, the stone will be called a pink sapphire. Drawing a distinction between rubies and pink sapphires is relatively new, having arisen sometime in the 20th century. Often, the distinction between ruby and pink sapphire is not clear and can be debated. As a result of the difficulty and subjectiveness of such distinctions, trade organizations such as the International Colored Gemstone Association (ICGA) have adopted the broader definition for ruby which encompasses its lighter shades, including pink.

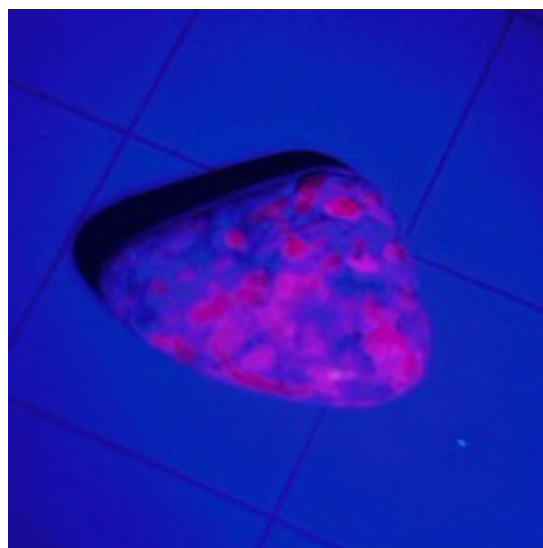
Historically, rubies have been mined in Thailand, in the Pailin and Samlout District of Cambodia, as well as in Afghanistan, Australia, Brazil, Colombia, India, Namibia, Japan, and Scotland. After the Second World War, ruby deposits were found in Madagascar, Mozambique, Nepal, Pakistan, Tajikistan, Tanzania, and Vietnam.

The Republic of North Macedonia is the only country in mainland Europe to have naturally occurring rubies. They can mainly be found around the city of Prilep. Macedonian rubies have a unique raspberry color.

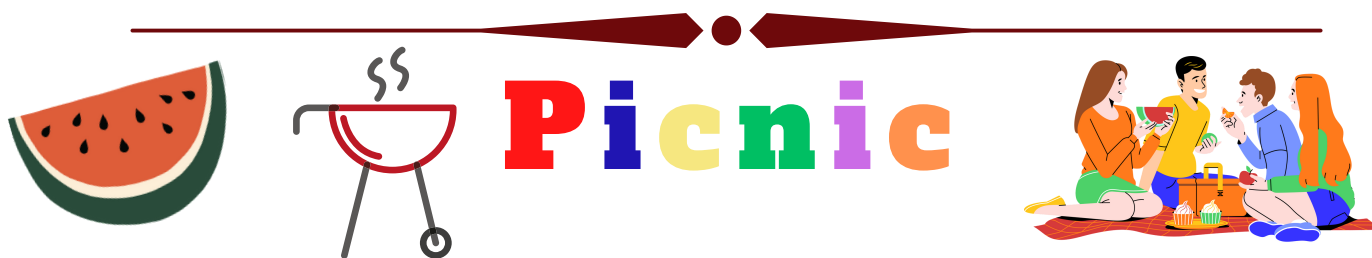
<https://en.wikipedia.org/wiki/Ruby>



Ruby Albite Tumbled



Ruby Albite tumbled and  
Fluorescenced



Don't forget the annual club picnic on August 20th. Sign up to help at the next meeting.

If you have something to auction, all proceeds go to the club, make sure to fill out the auction form. These will also be available at the July meeting. Also for club members you can set up a table to sell your rocks and lapidary items. **If you bring a tent please make sure you have sandbags or other weights for it as we are not allowed to use stakes.**

---

## Field Trip Dates

**Sunday, September 10th** White Fir Thundereggs - These thundereggs are filled with colorful jasper. Shades of red, yellow, and tan are available as well as a creamy white color. [fs.usda.gov](http://fs.usda.gov) White Fir Springs Collection Site



**Saturday, October 14th** Club Claim Agate

---

## Family Science Fair

Barnes Butte Elementary School in Prineville is looking for someone to have a rock display table at their Family Science Night in October. They would like to have a variety of rocks on display have the person to stay to give information about the rocks and answer questions. They would love it if the families could pick up the rocks, examine them and learn about this part of Earth Science. It's tentatively schedule for October 9th, 5:00-6:30.

If you are interested, please contact Becky Brauer, Assistant Principal Barnes Butte Elementary.  
[Becky.Brauer@crookcountyschools.org](mailto:Becky.Brauer@crookcountyschools.org)

## Next Club Meeting Date

**July 19th**

Presentation by Bruce McKay, "Rock Travels and Travails of an Old Bend Native, Goldsmith, Gem Dealer, Gemologist and Writer"

Doors open at 5:30 PM for visiting

Meeting starts at 6 PM

\*Those that won a door prize last month please bring a door prize this month.

---

**Meetings are held every third Wednesday of every month from March through October at the OSU Extension Service Building**

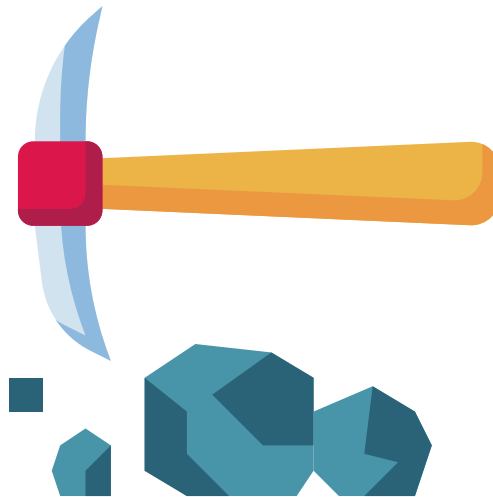
**3800 SE Airport Way Bldg 3 "The Annex"**

**Redmond, OR at 6:00 PM. The only exception is August when CORC has its annual picnic. In November, CORC has its annual holiday party. The club does not meet from December through February.**

---

Meeting minutes can be found at [corockcollectors.com](http://corockcollectors.com)

---



## Upcoming Area Rock Shows

**August 18-20 End of Summer Rock Show**

Polk County Fairgrounds Rickreall, OR

Contact Person: Len Stubenrauch

[wams.riverofgems@gmail.com](mailto:wams.riverofgems@gmail.com), [www.WAMSI.net](http://www.WAMSI.net)

**For more Rock Shows please check out the February 2023 Newsletter**

**REMINDER:**

Please mail membership form and check to:  
Central Oregon Rock Collectors (CORC)  
P.O. Box 6265  
Bend, OR 97708

Annual membership dues are \$20 for individuals, \$25 for household  
and \$5 for juniors.

You may find the form on our website at [corockcollectors.com](http://corockcollectors.com)

**OR**

**You may now go to our website [corockcollectors.com](http://corockcollectors.com) to pay your  
membership dues online. Click on the Membership page.**

Club website:[corockcollectors.com](http://corockcollectors.com)

Please join our Facebook page:  
Central Oregon Rock Collectors

If you have any  
ideas for field trips please  
email Ken Lawson & Suzie  
Meeker at  
[corc.rocks@gmail.com](mailto:corc.rocks@gmail.com)

**CORC Board Members**

April Anable  
President

Patricia Moreland  
Vice President

Tonia Smith  
Secretary

Nancy Johnston  
Treasurer

Tonia Smith  
Co-Newsletter Editor

Nancy Johnston  
Co-Newsletter Editor

Ken Lawson  
Co-Field Trip Chair

Suzie Meeker  
Co-Field Trip Chair

Gale Rivera  
Co-Program Committee Chair

Marty Betsch

Co-Program Committee Chair

Barb Thompson  
Claims Chair

April Anable  
Social Media & Webmaster

If you would like to reach any of the board members please email them at  
[corc.rocks@gmail.com](mailto:corc.rocks@gmail.com)

# Business cards and announcements

## **CigarboxRock**

The temporary office is a "job shack" located at 63273 Nels Anderson Rd.

Give us a call before coming in! Currently open: Tuesday-Saturday  
9:00 am to 3:00 pm

CORC members receive a discount at CigarboxRock!

**CBR@BENDNET.COM**

Call (541)389-9663 or visit our website, <https://cigarboxrock.com>



**Classified Ads:** If you have a rockhound-related item you wish to advertise, send the announcement to Tonia Smith and Nancy Johnston at [corcrocks@gmail.com](mailto:corcrocks@gmail.com)